

*DAMAC*  
**BAY**  
BY CAVALLI

LIFE COMES TO A HOLD

THERE IS ONLY THE SEA

FOR THE POWER OF ITS SONG

HAS TAKEN HOLD OF ME





THE MORNING  
BREEZE IS A  
HERALD,  
A MESSENGER  
FROM THE SEA.  
IT WHISPERS  
IN MY EAR  
TELLING ME  
TO BE FREE.



THE WAVES  
SING TO ME,  
CALLING ME  
TO THE  
SOFT SAND.  
THE WATER  
SWEEPS OVER  
MY FEET,  
SURROUNDING  
ME WHERE  
I STAND.



## THE SONG OF THE SEA

The sound of the waves.  
The blowing of a sea breeze.  
The chirping of seabirds.  
All of these come together  
at DAMAC Bay to form a  
mesmerising song of the sea.  
The captivating melody invites  
you to its very shores, and you  
soon find yourself seamlessly in  
rhythm with it.



DAMAC

دamac

D

DAMAC

WESTIN

DAMAC BAY BY CAVALLI

7<sup>th</sup> BA-4-33-10

DAMAC BAY BY CAVALLI

# A TREASURE, RISING FROM THE DEEP

DAMAC Bay by Cavalli is a magnificent 42-storey development that blurs the line between true luxury and maritime bliss. With sleek exteriors and nautical-themed interiors by the iconic fashion brand Cavalli, DAMAC Bay comes with a treasure chest full of amenities and attractions, each more unique and extravagant than the other.

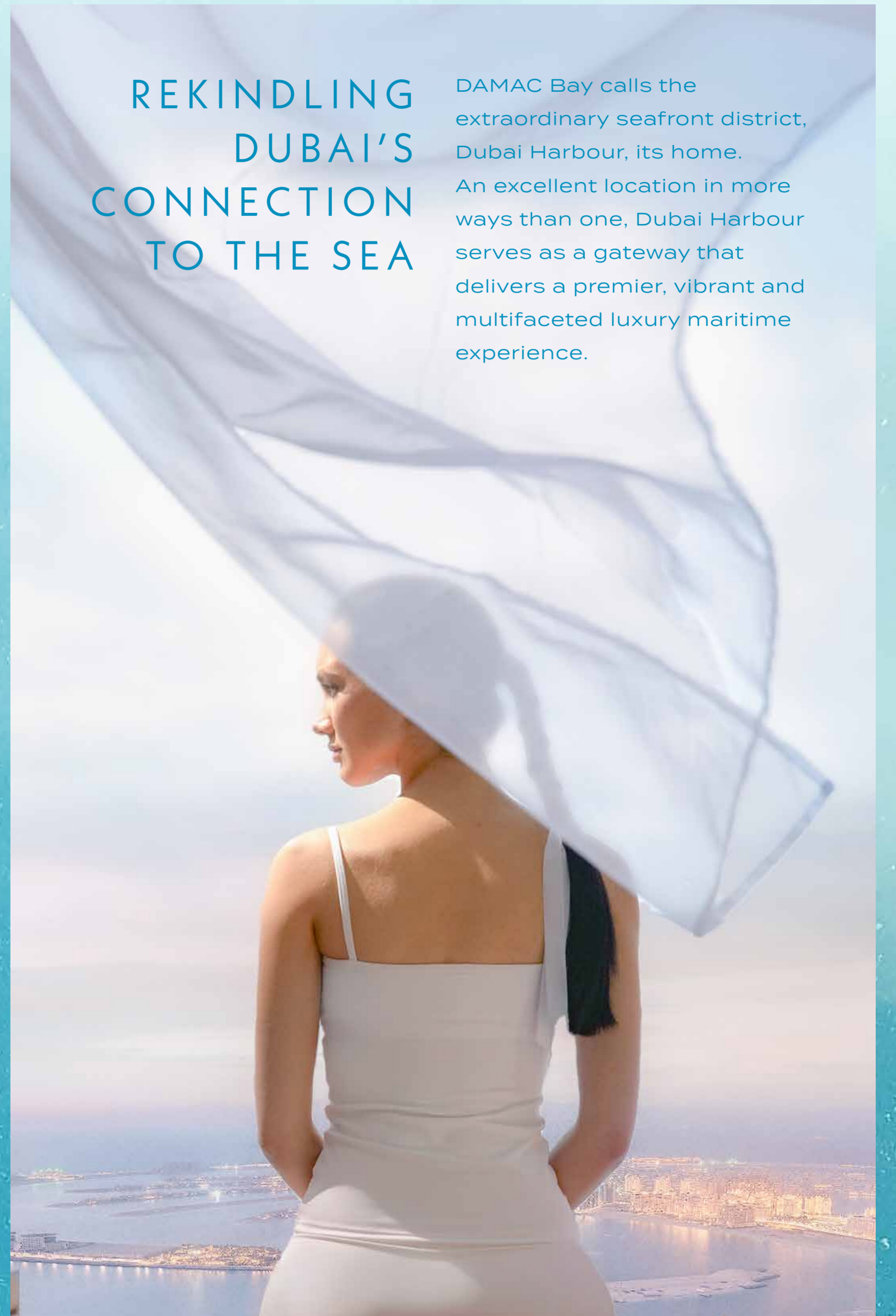




DAMAC  
**BAY**  
BY CAVALLI

## REKINDLING DUBAI'S CONNECTION TO THE SEA

DAMAC Bay calls the extraordinary seafront district, Dubai Harbour, its home. An excellent location in more ways than one, Dubai Harbour serves as a gateway that delivers a premier, vibrant and multifaceted luxury maritime experience.





DAMAC  
BAY  
BY CAVALLI





## THE ESSENCE OF AN UNTAMED OCEAN

Cavalli is a fashion brand known the world over for its iconic nature-inspired fashion pieces. It brings this wild creativity to DAMAC Bay, trading the leopard and tiger prints for sea shells, pearls and zebrafish-inspired patterns.

**cavalli**

# THE SUN, THE SKY, THE SEA AND YOU

DAMAC Bay offers a seaside lifestyle like no other, because of one very unique feature.

The towers have been carefully crafted in such a way that each and every unit will enjoy sea views, regardless of where they face.

The sleek exteriors mimic the ocean's waves, and at the crest, is a Cavalli-inspired bridge that coils around the towers like a sea serpent.



An aerial view of a luxury resort. The main feature is a large, winding infinity pool with a white, wavy architectural structure along its edge. The pool is surrounded by wooden decks with lounge chairs and palm trees. To the right, there is a private beach with white sand and turquoise water. The resort building is modern with a white, curved facade. The sky is blue with some clouds, and several palm trees are visible on the left side of the image.

# A BEACH AT YOUR DOORSTEP

Few things say luxury like having an exquisite private beach created just for you. Saunter along the soft sand, stopping only to grab a quick bite at one of the many F&B offerings. Or swap the sand for velvet and leather, and pamper yourself at the lavish Cavalli Lounge.

# FIND JOY IN THE CLOUDS

High up in the roof lie even more spectacular amenities. Take in a deep breath, and an astonishing vista, from the three infinity pools, one on each tower. Then turn work into pleasure while onboard floating workstations.





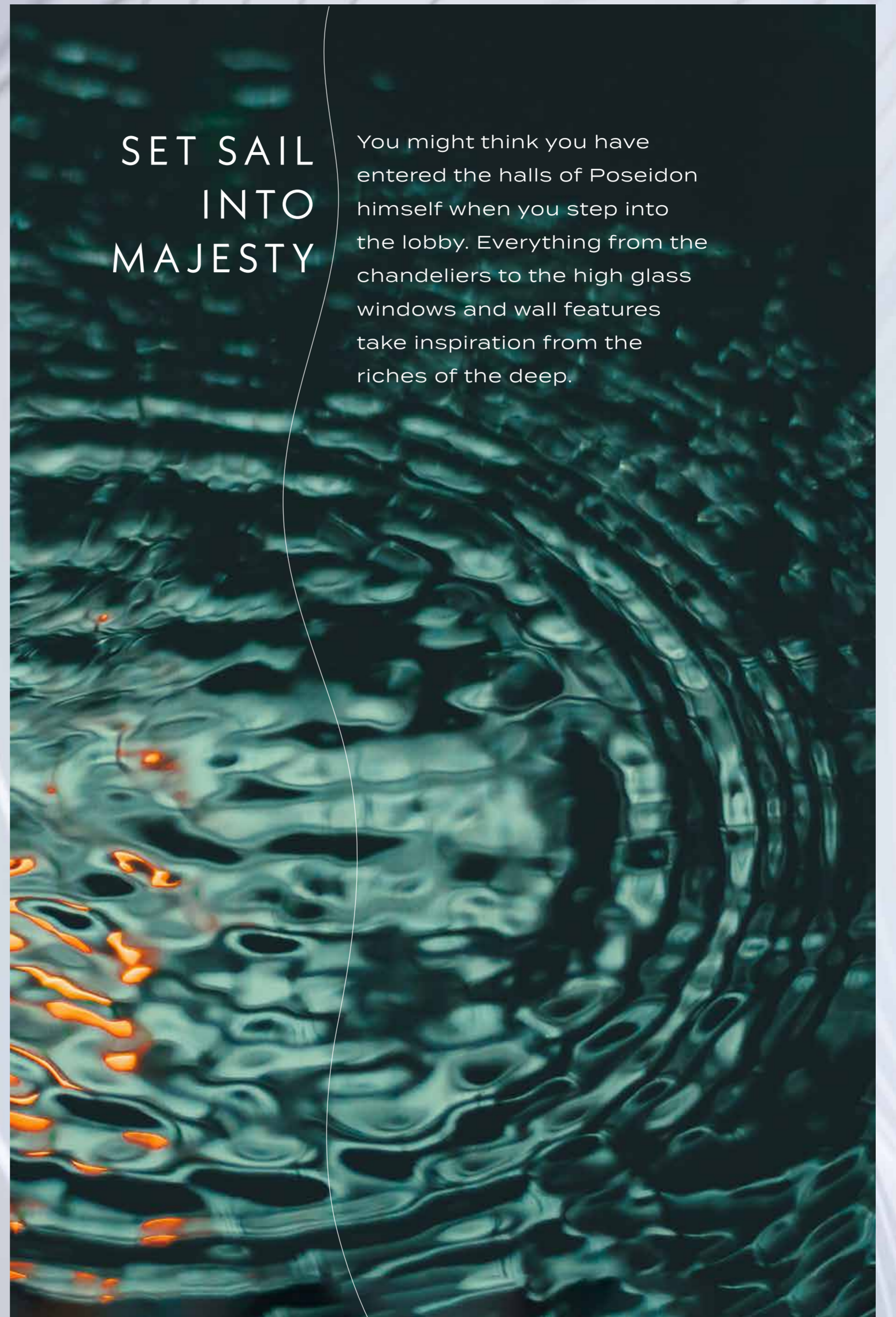
DAMAC BAY BY CAVALLI

The little ones will never skip a class at the virtual reality school, where educational lessons are laser-projected on a water fountain. Finally, treat your ears to a scintillating performance, or put your own vocal chords to the test at the rooftop Opera Pavilion.



## SET SAIL INTO MAJESTY

You might think you have entered the halls of Poseidon himself when you step into the lobby. Everything from the chandeliers to the high glass windows and wall features take inspiration from the riches of the deep.





JAMAC BY CAVALLI







CAMACRAY BY CAVALLI

## MARITIME PLEASURES, EXPLORED

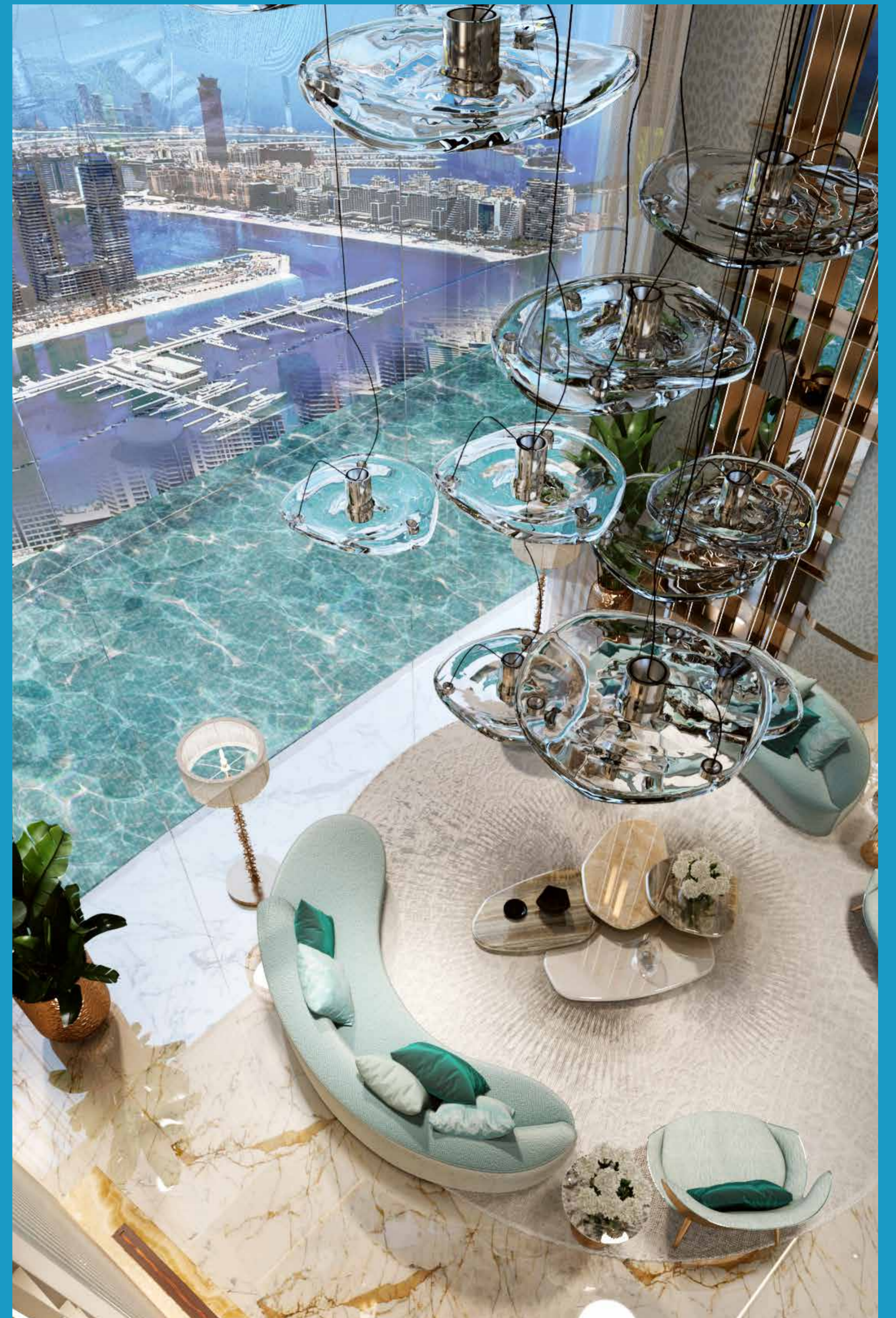
The song of the sea is like a mermaid's call. Unmistakable, and inescapable. Dance to its tune at some of the many amenities on the Podium Level. Pirouette through an elegantly crafted water maze. Dive into a luxury snorkeling experience in search of Cavalli treasures. Find your balance atop a surfboard at the wave pool. Or simply relax on a hammock, suspended above an infinity pool, as a smart-tray brings you a beverage of your choice whenever you desire.

And then there's the crowning glory of DAMAC Bay by Cavalli... an enormous water fountain in the central tower that is synced to the opera performances, putting on a stunning show visible from miles away.



A WORLD  
OF YOUR  
OWN

Surround yourself with  
the sky, the sun and  
the sea, on an island  
of happiness that  
you have created  
for yourself.



Above the podium, from the 2<sup>nd</sup> to the 32<sup>nd</sup> floors are the luxury 1-, 2- and 3-bedroom units. All of these have been crafted in exquisite detail to provide a stunning seafront lifestyle.





DAMAC BAY BY CAVALLI





BUT FOR  
THE MOST  
DISCERNING  
OF CAPTAINS...

Only the super-luxury units will do. These are found on the 33<sup>rd</sup> to the 42<sup>nd</sup> floors, and range in size from 3- to 5-bedroom duplex units. All of these units afford commanding views of the sea and the shore alike. These are truly the pinnacle of seafront luxury living.



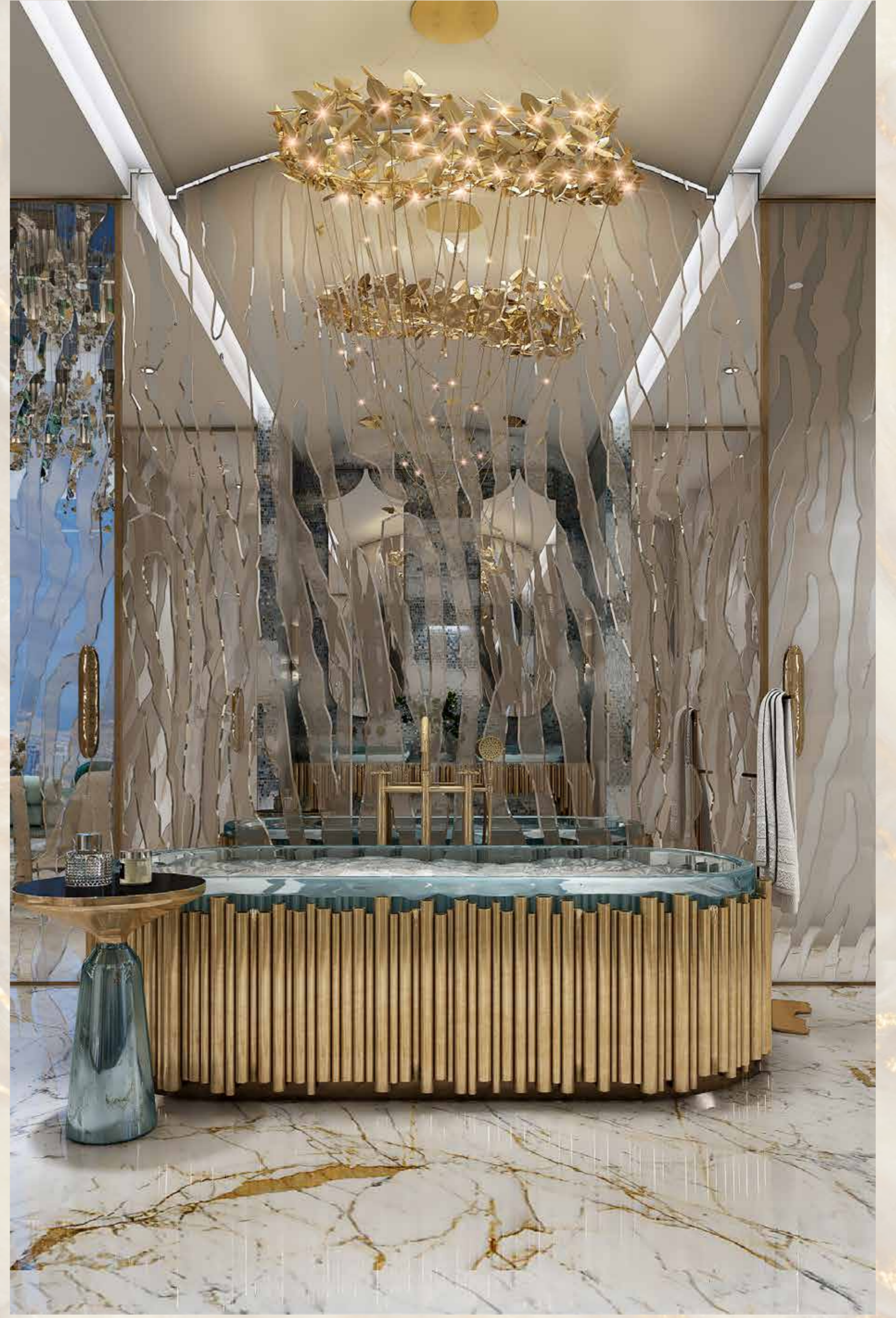




DAMAC BAY BY CA



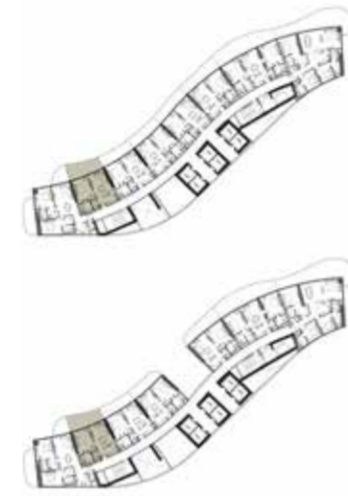
DAMAC BAY BY CAVALLI





# 1-BEDROOM LUXURY

TYPE 01



**TOWER A:**  
LEVELS:  
2,6,12,15,21,25,29

**TOWER B:**  
LEVELS:  
2,8,12,19,21,29,32

**TOWER A:**  
LEVEL:  
18

**TOWER B:**  
LEVEL:  
14

# 1-BEDROOM LUXURY

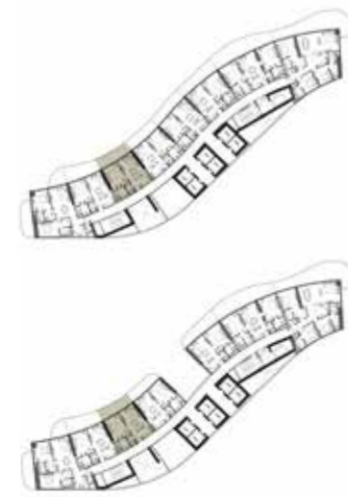
TYPE 03



**TOWER A:**  
LEVELS:  
2,6,12,15,21,25,29

**TOWER B:**  
LEVELS:  
2,8,12,19,21,29,32

TYPE 02



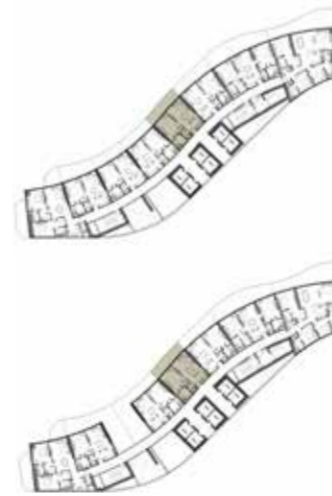
**TOWER A:**  
LEVELS:  
2,6,12,15,21,25,29

**TOWER B:**  
LEVELS:  
2,8,12,19,21,29,32

**TOWER A:**  
LEVEL:  
18

**TOWER B:**  
LEVEL:  
14

TYPE 04



**BALCONY TYPE 1**

**TOWER A:**  
LEVELS:  
2,6,12,15,21,25,29

**TOWER B:**  
LEVELS:  
2,8,12,19,21,29,32

**SKY GARDEN 1**

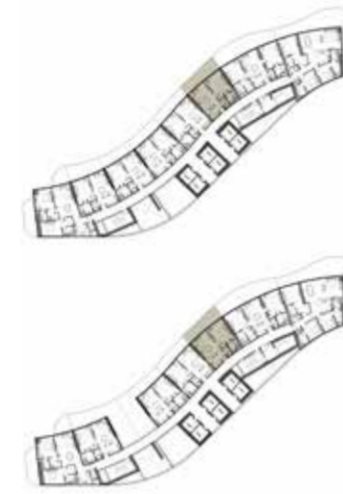
**BALCONY TYPE 0**

**TOWER A:**  
LEVEL:  
9

**TOWER B:**  
LEVEL:  
5

# 1-BEDROOM LUXURY

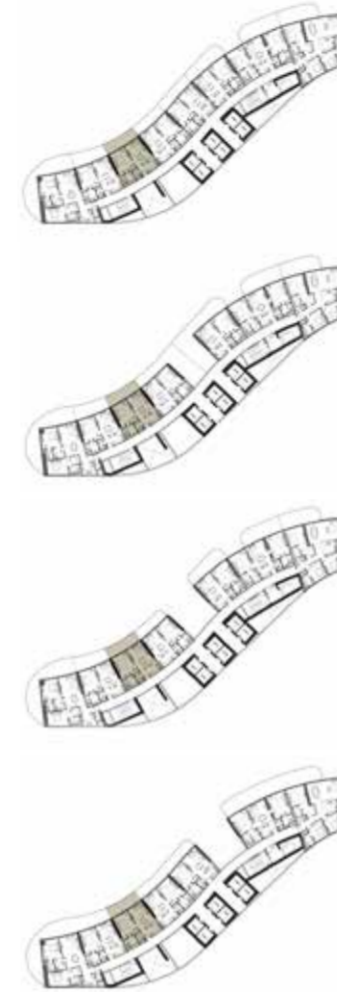
TYPE 05



**BALCONY TYPE 1**  
**TOWER A:**  
 LEVELS:  
 2,6,12,15,21,25,29  
**TOWER B:**  
 LEVELS:  
 2,8,12,19,21,29,32  
**SKY GARDEN 1**  
**BALCONY TYPE 0**  
**TOWER A:**  
 LEVEL:  
 9  
**TOWER B:**  
 LEVEL:  
 5

# 1-BEDROOM LUXURY

TYPE 07



**TOWER A:**  
 LEVELS:  
 3,5,13,14,30,32  
**TOWER B:**  
 LEVELS:  
 3,9,17,18,27,30  
**TOWER A:**  
 LEVEL:  
 17  
**TOWER B:**  
 LEVEL:  
 13  
**TOWER A:**  
 LEVEL:  
 19  
**TOWER B:**  
 LEVEL:  
 15  
**TOWER A:**  
 LEVEL:  
 27  
**TOWER B:**  
 LEVEL:  
 25

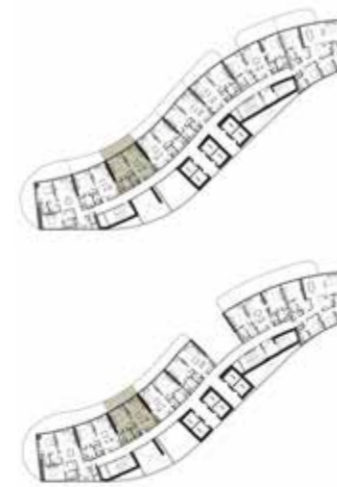


TYPE 06



**TOWER A:**  
 LEVELS:  
 3,5,13,14,30,32  
**TOWER B:**  
 LEVELS:  
 3,9,17,18,27,30  
**TOWER A:**  
 LEVEL:  
 17  
**TOWER B:**  
 LEVEL:  
 13  
**TOWER A:**  
 LEVEL:  
 19  
**TOWER B:**  
 LEVEL:  
 15  
**TOWER A:**  
 LEVEL:  
 27  
**TOWER B:**  
 LEVEL:  
 25

TYPE 08

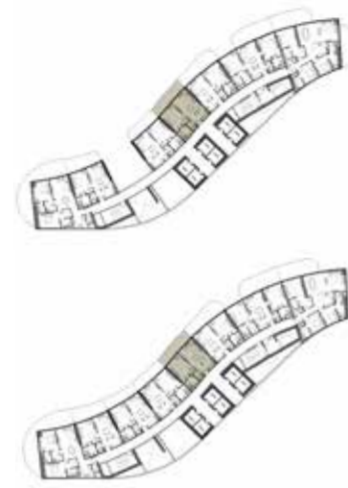


**TOWER A:**  
 LEVELS:  
 3,5,13,14,30,32  
**TOWER B:**  
 LEVELS:  
 3,9,17,18,27,30  
**TOWER A:**  
 LEVEL:  
 17  
**TOWER B:**  
 LEVEL:  
 25



# 1-BEDROOM LUXURY

TYPE 09



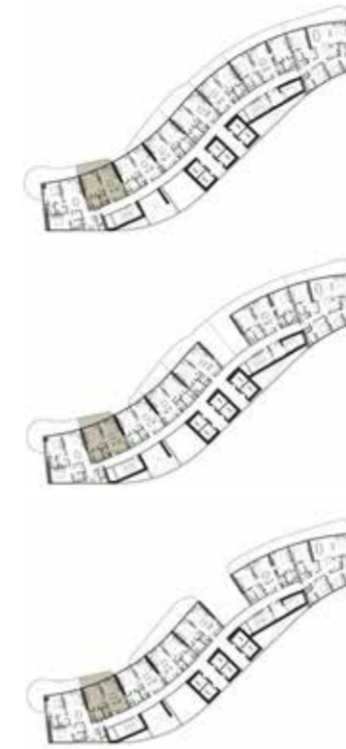
**SKY GARDEN 1  
BALCONY TYPE 2**  
**TOWER A:**  
LEVEL:  
11  
**TOWER B:**  
LEVEL:  
7

---

**BALCONY TYPE 2**  
**TOWER A:**  
LEVELS:  
3,5,13,14,30,32  
**TOWER B:**  
LEVELS:  
3,9,17,18,27,30

# 1-BEDROOM LUXURY

TYPE 11



**TOWER A:**  
LEVELS:  
4,7,8,16,20,22,24,31  
**TOWER B:**  
LEVELS:  
4,10,11,16,20,22,28,31

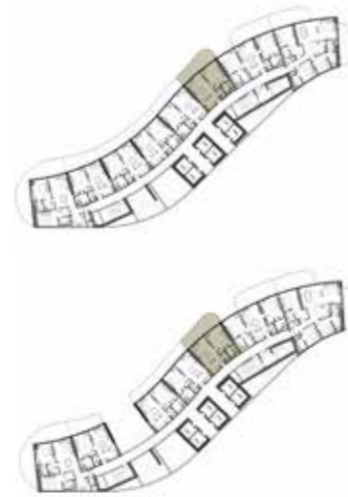
---

**TOWER A:**  
LEVEL:  
26  
**TOWER B:**  
LEVEL:  
24

---

**TOWER A:**  
LEVEL:  
28  
**TOWER B:**  
LEVEL:  
26

TYPE 10

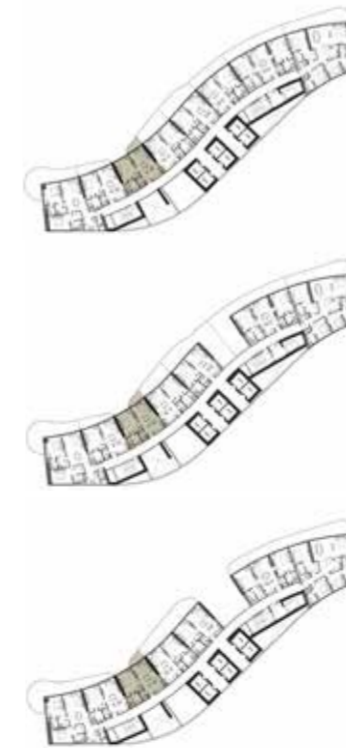


**BALCONY TYPE 2**  
**TOWER A:**  
LEVELS:  
3,5,13,14,30,32  
**TOWER B:**  
LEVELS:  
3,9,17,18,27,30

---

**SKY GARDEN 1  
BALCONY TYPE 2**  
**TOWER A:**  
LEVEL:  
11  
**TOWER B:**  
LEVEL:  
7

TYPE 12



**TOWER A:**  
LEVELS:  
4,7,8,16,20,22,24,31  
**TOWER B:**  
LEVELS:  
4,10,11,16,20,22,28,31

---

**TOWER A:**  
LEVEL:  
26  
**TOWER B:**  
LEVEL:  
24

---

**TOWER A:**  
LEVEL:  
28  
**TOWER B:**  
LEVEL:  
26

# 1-BEDROOM LUXURY

TYPE 13



**TOWER A:**  
LEVELS:  
4,7,8,16,20,22,24,31

**TOWER B:**  
LEVELS:  
4,10,11,16,20,22,28,31

---

**TOWER A:**  
LEVEL:  
26

**TOWER B:**  
LEVEL:  
24

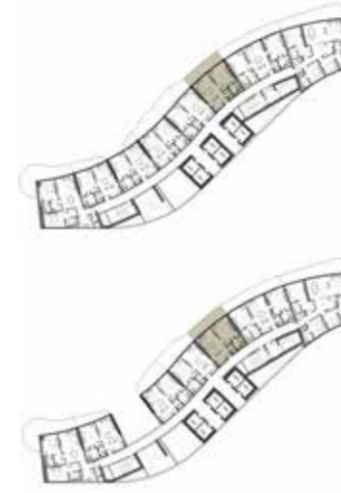
---

**TOWER A:**  
LEVEL:  
28

**TOWER B:**  
LEVEL:  
26

# 1-BEDROOM LUXURY

TYPE 15



**BALCONY TYPE 3**

**TOWER A:**  
LEVELS:  
4,7,8,16,20,22,24,31

**TOWER B:**  
LEVELS:  
4,10,11,16,20,22,28,31

---

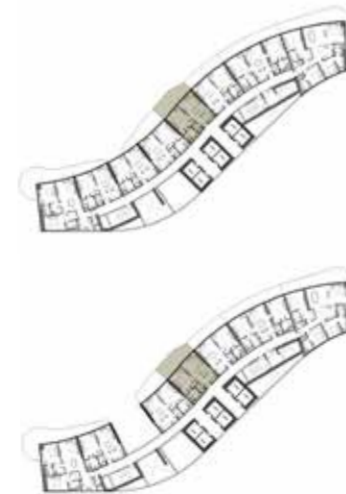
**SKY GARDEN 1**

**BALCONY TYPE 1**

**TOWER A:**  
LEVEL:  
10

**TOWER B:**  
LEVEL:  
6

TYPE 14



**BALCONY TYPE 3**

**TOWER A:**  
LEVELS:  
4,7,8,16,20,22,24,31

**TOWER B:**  
LEVELS:  
4,10,11,16,20,22,28,31

---

**SKY GARDEN 1**

**BALCONY TYPE 1**

**TOWER A:**  
LEVEL:  
10

**TOWER B:**  
LEVEL:  
6

TYPE 16



**TOWER A:**  
LEVEL:  
9

**TOWER B:**  
LEVEL:  
5



# 1-BEDROOM LUXURY

TYPE 17



**TOWER A:**  
LEVEL:  
9

**TOWER B:**  
LEVEL:  
5

# 1-BEDROOM LUXURY

TYPE 19



**TOWER A:**  
LEVEL:  
10

**TOWER B:**  
LEVEL:  
6

TYPE 18



**TOWER A:**  
LEVEL:  
10

**TOWER B:**  
LEVEL:  
6

TYPE 20



**TOWER A:**  
LEVEL:  
11

**TOWER B:**  
LEVEL:  
7

# 1-BEDROOM LUXURY

TYPE 21



**TOWER A:**  
LEVEL:  
11

**TOWER B:**  
LEVEL:  
7

# 1-BEDROOM LUXURY

TYPE 23



**SKY GARDEN 2  
BALCONY TYPE O**

**TOWER A:**  
LEVEL:  
17

**TOWER B:**  
LEVEL:  
13

TYPE 22



**TOWER A:**  
LEVEL:  
17

**TOWER B:**  
LEVEL:  
13

TYPE 24



**TOWER A:**  
LEVEL:  
18

**TOWER B:**  
LEVEL:  
14

# 1-BEDROOM LUXURY

TYPE 25



**SKY GARDEN 2  
BALCONY TYPE 1**  
TOWER A:  
LEVEL:  
18  
TOWER B:  
LEVEL:  
14

# 1-BEDROOM LUXURY

TYPE 27



**SKY GARDEN 2  
BALCONY TYPE 2**  
TOWER A:  
LEVEL:  
19  
TOWER B:  
LEVEL:  
15

TYPE 26



**TOWER A:**  
LEVEL:  
19  
**TOWER B:**  
LEVEL:  
15

TYPE 28



**SKY GARDEN 3  
BALCONY TYPE O**  
TOWER A:  
LEVEL:  
26  
TOWER B:  
LEVEL:  
24

# 1-BEDROOM LUXURY

TYPE 29

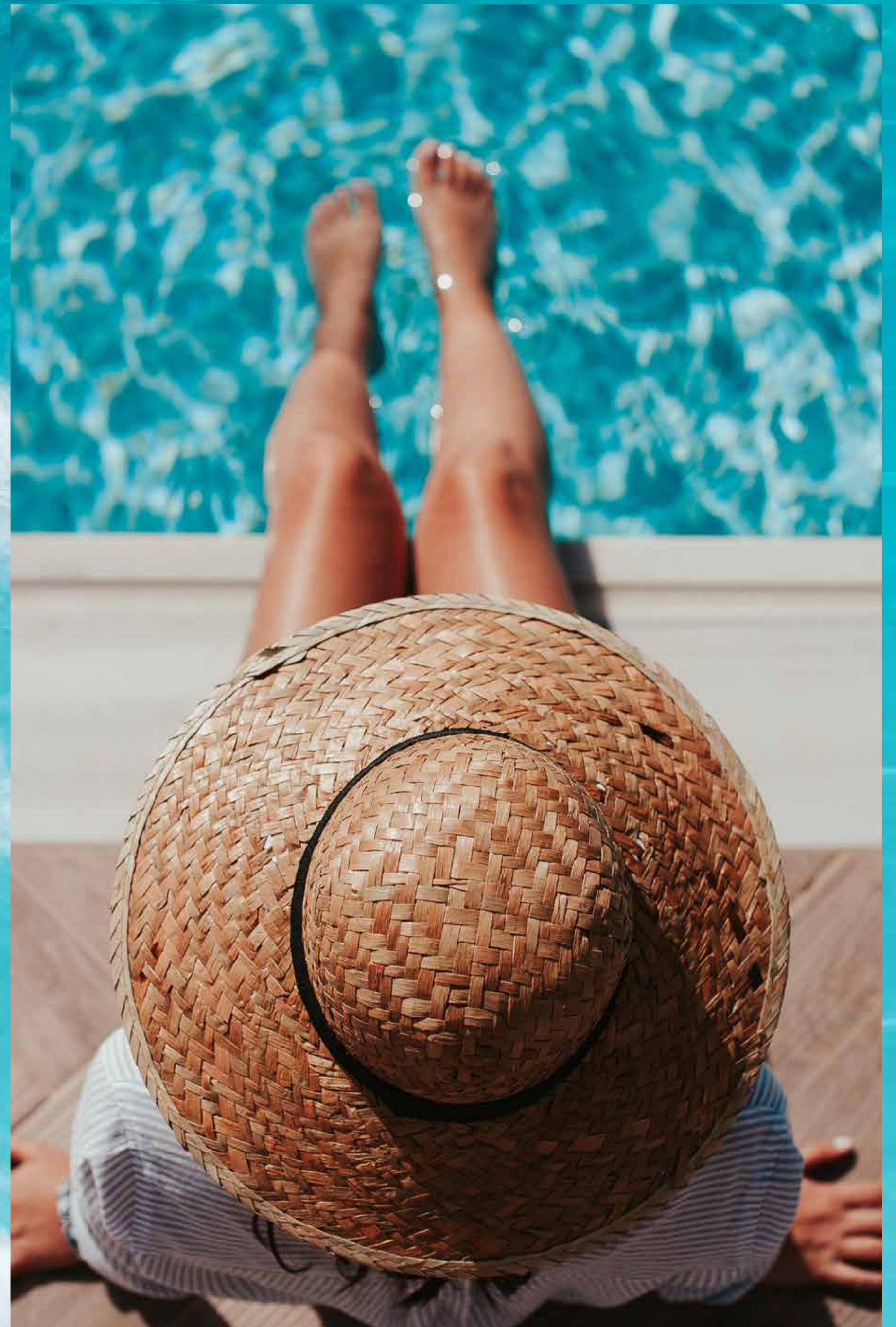


**SKY GARDEN 3  
BALCONY TYPE 1**  
**TOWER A:**  
LEVEL:  
27  
**TOWER B:**  
LEVEL:  
25

TYPE 30



**SKY GARDEN 3  
BALCONY TYPE 2**  
**TOWER A:**  
LEVEL:  
28  
**TOWER B:**  
LEVEL:  
26



# 2-BEDROOM LUXURY

TYPE 01

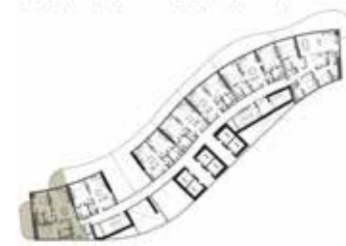


# 2-BEDROOM LUXURY

TYPE 02



**BALCONY TYPE 1**  
**TOWER A:**  
 LEVELS:  
 2,6,12,15,21,25,29  
**TOWER B:**  
 LEVELS:  
 2,8,12,19,21,29,32



**SKY GARDEN 1**  
**BALCONY TYPE 0**  
**TOWER A:**  
 LEVEL:  
 9  
**TOWER B:**  
 LEVEL:  
 5



**SKY GARDEN 1**  
**BALCONY TYPE 0**  
**TOWER A:**  
 LEVEL:  
 18  
**TOWER B:**  
 LEVEL:  
 14



**TOWER A:**  
 LEVELS:  
 3,5,13,14,30,32  
**TOWER B:**  
 LEVELS:  
 3,9,17,18,27,30



**TOWER A:**  
 LEVEL:  
 11  
**TOWER B:**  
 LEVEL:  
 7



**TOWER A:**  
 LEVEL:  
 17  
**TOWER B:**  
 LEVEL:  
 13



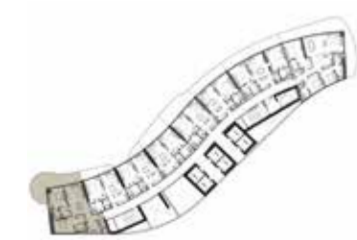
**TOWER A:**  
 LEVEL:  
 19  
**TOWER B:**  
 LEVEL:  
 15



**TOWER A:**  
 LEVEL:  
 27  
**TOWER B:**  
 LEVEL:  
 25

# 2-BEDROOM LUXURY

TYPE 03



**TOWER A:**  
LEVELS:  
4,7,8,16,20,22,24,31

**TOWER B:**  
LEVELS:  
4,10,11,16,20,22,28,31



**TOWER A:**  
LEVEL:  
10

**TOWER B:**  
LEVEL:  
6



**TOWER A:**  
LEVEL:  
26

**TOWER B:**  
LEVEL:  
24



**TOWER A:**  
LEVEL:  
28

**TOWER B:**  
LEVEL:  
26

# 2-BEDROOM LUXURY

TYPE 04



**TOWER A:**  
LEVELS:  
2,6,12,15,21,25,29

**TOWER B:**  
LEVELS:  
2,8,12,19,21,29,32



**TOWER A:**  
LEVEL:  
9

**TOWER B:**  
LEVELS:  
5



**TOWER A:**  
LEVEL:  
18

**TOWER B:**  
LEVELS:  
14

# 2-BEDROOM LUXURY

TYPE 05



# 2-BEDROOM LUXURY

TYPE 06

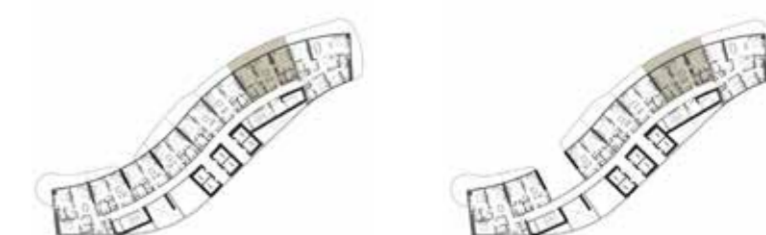


**BALCONY TYPE 2**  
**TOWER A:**  
 LEVELS:  
 3,5,13,14,30,32  
**TOWER B:**  
 LEVELS:  
 3,9,17,18,27,30

**SKY GARDEN 1**  
**BALCONY TYPE 2**  
**TOWER A:**  
 LEVEL:  
 11  
**TOWER B:**  
 LEVEL:  
 7

**SKY GARDEN 2**  
**BALCONY TYPE 0**  
**TOWER A:**  
 LEVEL:  
 17  
**TOWER B:**  
 LEVEL:  
 13

**SKY GARDEN 2**  
**BALCONY TYPE 2**  
**TOWER A:**  
 LEVEL:  
 19  
**TOWER B:**  
 LEVEL:  
 15



**BALCONY TYPE 3**  
**TOWER A:**  
 LEVELS:  
 4,7,8,16,20,22,24,31  
**TOWER B:**  
 LEVELS:  
 4,10,11,16,20,22,28,31

**SKY GARDEN 1**  
**BALCONY TYPE 1**  
**TOWER A:**  
 LEVEL:  
 10  
**TOWER B:**  
 LEVEL:  
 6

# 2-BEDROOM LUXURY

TYPE 07



**SKY GARDEN 3  
BALCONY TYPE 0**  
TOWER A:  
LEVEL:  
26  
TOWER B:  
LEVEL:  
24

# 2-BEDROOM LUXURY

TYPE 08



**SKY GARDEN 3  
BALCONY TYPE 1**  
TOWER A:  
LEVEL:  
27  
TOWER B:  
LEVEL:  
25



## 2-BEDROOM LUXURY

TYPE 09



**SKY GARDEN 3  
BALCONY TYPE 2**  
TOWER A:  
LEVEL:  
28  
TOWER B:  
LEVEL:  
26

## 3-BEDROOM LUXURY

TYPE 01



**BALCONY TYPE 1**  
TOWER A:  
LEVELS:  
2,6,12,15,21,25,29  
TOWER B:  
LEVELS:  
2,8,12,19,21,29,32



**SKY GARDEN 1  
BALCONY TYPE 0**  
TOWER A:  
LEVEL:  
9  
TOWER B:  
LEVEL:  
5



**SKY GARDEN 2  
BALCONY TYPE 1**  
TOWER A:  
LEVEL:  
18  
TOWER B:  
LEVEL:  
14

# 3-BEDROOM LUXURY

TYPE 02



# 3-BEDROOM LUXURY

TYPE 03



**BALCONY TYPE 2**  
**TOWER A:**  
 LEVELS:  
 3,5,13,14,30,32  
**TOWER B:**  
 LEVELS:  
 3,9,17,18,27,30



**SKY GARDEN 1**  
**BALCONY TYPE 2**  
**TOWER A:**  
 LEVEL:  
 11  
**TOWER B:**  
 LEVEL:  
 7



**SKY GARDEN 2**  
**BALCONY TYPE 0**  
**TOWER A:**  
 LEVEL:  
 17  
**TOWER B:**  
 LEVEL:  
 13



**SKY GARDEN 2**  
**BALCONY TYPE 0**  
**TOWER A:**  
 LEVEL:  
 17  
**TOWER B:**  
 LEVEL:  
 13



**SKY GARDEN 2**  
**BALCONY TYPE 2**  
**TOWER A:**  
 LEVEL:  
 19  
**TOWER B:**  
 LEVEL:  
 15



**BALCONY TYPE 3**  
**TOWER A:**  
 LEVELS:  
 4,7,8,16,20,22,24,31  
**TOWER B:**  
 LEVELS:  
 4,10,11,16,20,22,28,31



**SKY GARDEN 1**  
**BALCONY TYPE 1**  
**TOWER A:**  
 LEVEL:  
 10  
**TOWER B:**  
 LEVEL:  
 6



**SKY GARDEN 3**  
**BALCONY TYPE 0**  
**TOWER A:**  
 LEVEL:  
 26  
**TOWER B:**  
 LEVEL:  
 24



**SKY GARDEN 3**  
**BALCONY TYPE 2**  
**TOWER A:**  
 LEVEL:  
 28  
**TOWER B:**  
 LEVEL:  
 26

# 3-BEDROOM SUPER LUXURY DUPLEX

TYPE 01



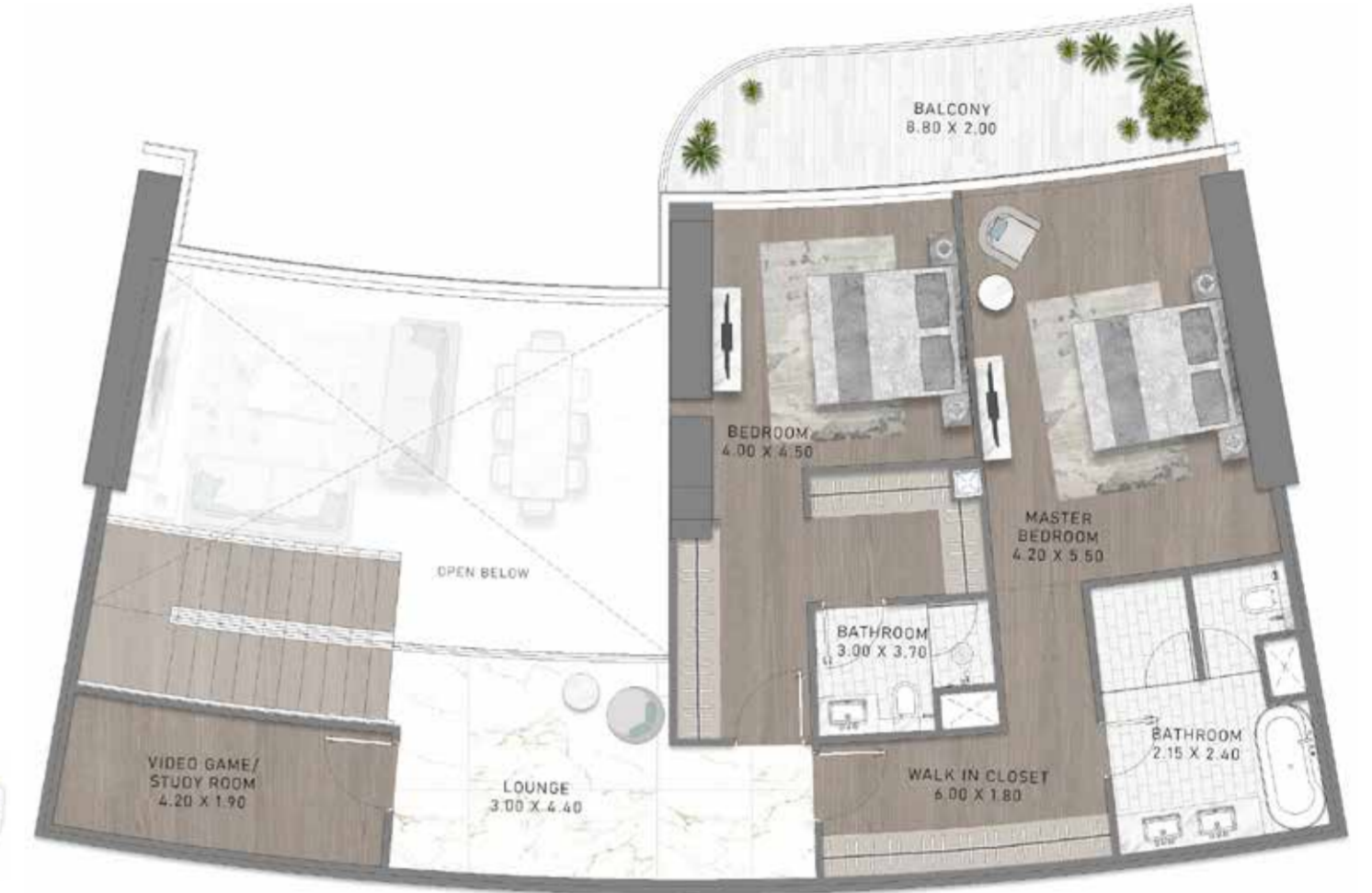
UPPER FLOOR



**SUPER LUXURY BALCONY TYPE 1**  
**TOWER A:**  
 LEVELS:  
 33,35,37,39  
**TOWER B:**  
 LEVELS:  
 33,35,37,39,41

# 3-BEDROOM SUPER LUXURY DUPLEX

TYPE 02



UPPER FLOOR



**SUPER LUXURY BALCONY TYPE 1**  
**TOWER A:**  
 LEVELS:  
 33,37  
**TOWER B:**  
 LEVELS:  
 33,37,41



LOWER FLOOR



LOWER FLOOR

# 3-BEDROOM SUPER LUXURY DUPLEX

TYPE 03

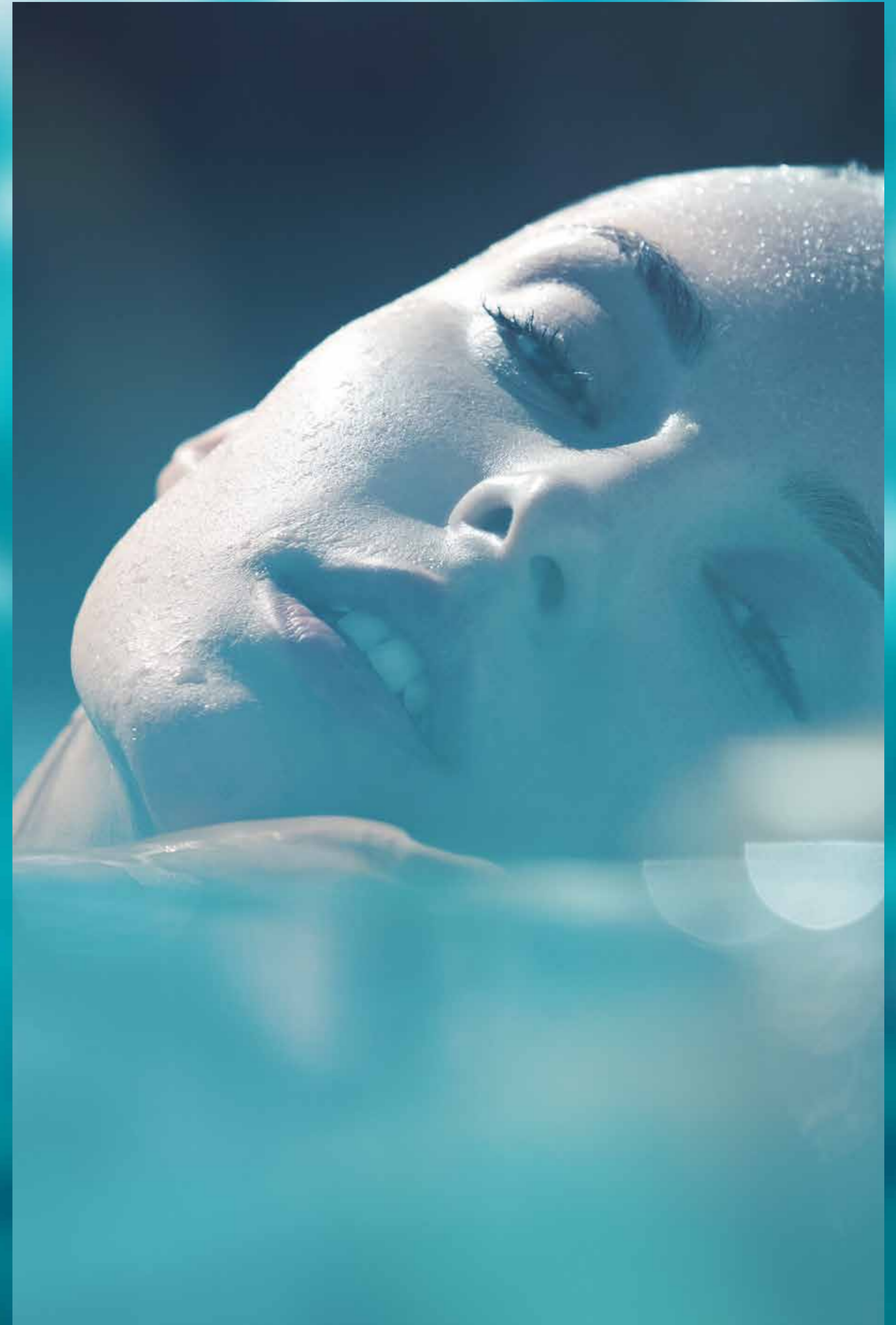


UPPER FLOOR

**SUPER LUXURY  
BALCONY TYPE 2**  
**TOWER A:**  
 LEVELS:  
 35,39  
**TOWER B:**  
 LEVELS:  
 35,39



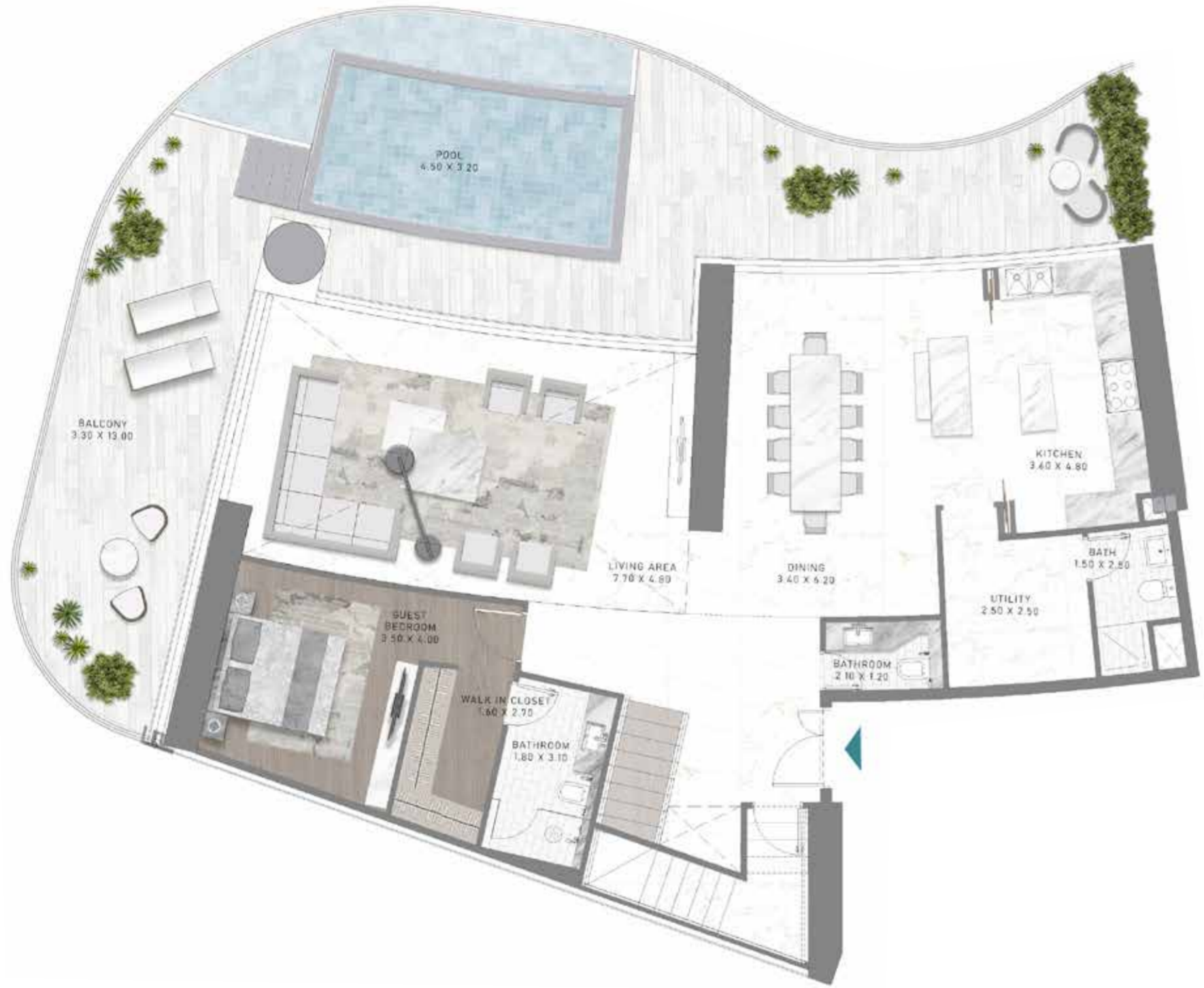
LOWER FLOOR



# 4-BEDROOM SUPER LUXURY DUPLEX

TYPE 01

# 4-BEDROOM SUPER LUXURY DUPLEX



LOWER FLOOR



UPPER FLOOR



**SUPER LUXURY BALCONY TYPE 2**  
**TOWER A:**  
 LEVELS:  
 35,39  
**TOWER B:**  
 LEVELS:  
 35,39

# 4-BEDROOM SUPER LUXURY DUPLEX

TYPE 02

# 4-BEDROOM SUPER LUXURY DUPLEX



LOWER FLOOR



UPPER FLOOR



**SUPER LUXURY BALCONY TYPE 1**  
**TOWER A:**  
 LEVELS:  
 33,37  
**TOWER B:**  
 LEVELS:  
 33,37,41

# 5-BEDROOM SUPER LUXURY DUPLEX

TYPE 01

# 5-BEDROOM SUPER LUXURY DUPLEX



LOWER FLOOR



UPPER FLOOR



**SUPER LUXURY  
BALCONY TYPE 2**  
TOWER A:  
LEVELS:  
35,39  
TOWER B:  
LEVELS:  
35,39

# 5-BEDROOM SUPER LUXURY DUPLEX

TYPE 02

# 5-BEDROOM SUPER LUXURY DUPLEX



LOWER FLOOR



UPPER FLOOR



**SUPER LUXURY  
BALCONY TYPE 1**  
**TOWER A:**  
LEVELS:  
33,37  
**TOWER B:**  
LEVELS:  
33,37,41



# DAMAC PROPERTIES

---

## LIVE THE LUXURY

DAMAC Properties has been at the forefront of the Middle East's luxury real estate market since 2002, delivering award-winning residential, commercial and leisure properties across the region, including the UAE, Saudi Arabia, Qatar, Jordan, Lebanon, Iraq, Maldives, Canada, the United States, as well as the United Kingdom. Since then, the company has delivered approximately 42,000 homes, with a development portfolio of more than 28,000 at various stages of planning and progress.\*

Joining forces with some of the world's most eminent fashion and lifestyle brands, DAMAC has brought new and exciting living concepts to the market in collaborations that include a golf course managed by The Trump Organization, and luxury homes in association with Versace, Cavalli, Just Cavalli, de Grisogono, Paramount Hotels & Resorts, Rotana and the Radisson Hotel Group. With a consistent vision, and strong momentum, DAMAC Properties is building the next generation of Middle Eastern luxury living.

DAMAC places a great emphasis on philanthropy and corporate social responsibility. The Hussain Sajwani – DAMAC Foundation, a joint initiative between DAMAC Group and Hussain Sajwani, recently announced the launch of the 'Fresh Slate' in collaboration with the Dubai Police General Headquarters, aimed at aiding detainees in Dubai's Punitive and Correctional Institutions who have been charged with petty offences.

The HSDF has also pledged AED 5 million for the 1 Billion Meals initiative launched by Vice President and Prime Minister of the UAE, and Ruler of Dubai, His Highness Sheikh Mohammed bin Rashid Al Maktoum, at the start of Ramadan 2022, aimed at providing meals to underprivileged communities in 50 countries across the world.

DAMAC has also supported the vision of Sheikh Mohammed to train one million Arab coders in creating an empowered society through learning and skills development, an initiative that successfully wrapped up in May 2022.

# LUXURY BY APPOINTMENT

---

CONTACT US AT ANY OF OUR OFFICES OR VISIT [DAMACPROPERTIES.COM](https://damacproperties.com)

***DAMAC***